

34th NSW Environmental Education Conference

ACTIVENATURE

LEARNING, CITIZENSHIP, ACTIVISM FOR SUSTAINABILITY



Sustainability Education @ MCSL

Helen Byfield-Fleming
Anne Maree O'Neill





Eyes from Above
Aerial Photography

What do we do at MCSL?

- * MCSL is a registered charity, community-focused organisation & education facility that promotes sustainable technology & living practices in homes, schools & businesses.
- * The Centre teaches sustainable living practices through:
 - * Water management & efficiency
 - * Using energy from renewable sources
 - * Waste management & recycling
 - * Biodiversity through green space management, fruit & vegetable gardens & animal care

School Excursions @ MCSL

- * MCSL offers a range of half-day & full-day school excursions for primary & high school students connecting learners with nature & environmental sustainability
- * All excursions include a site tour highlighting sustainable technology & biodiversity on site
- * Workshops include composting/worm farming, seedling planting, water efficiency, renewable energy, animal care, waste management (food waste, recycling, contamination, dumping), aquaponics/hydroponics, indigenous food & culture
- * Excursions are mapped to school curriculum outcomes

We've been endorsed!



Professional Development @ MCSL

- * MCSL is NESA accredited & offers professional development training in sustainability
- * Examples of full day courses include:
 - * Sustainability & Green Energy – Power Sources
 - * Sustainability, Waste & Recycling (includes how to set up & maintain worm farms & compost systems)
- * MCSL supports Education for Sustainable Development (ESD) & the 2030 UN Sustainable Development Goals

We've been endorsed!



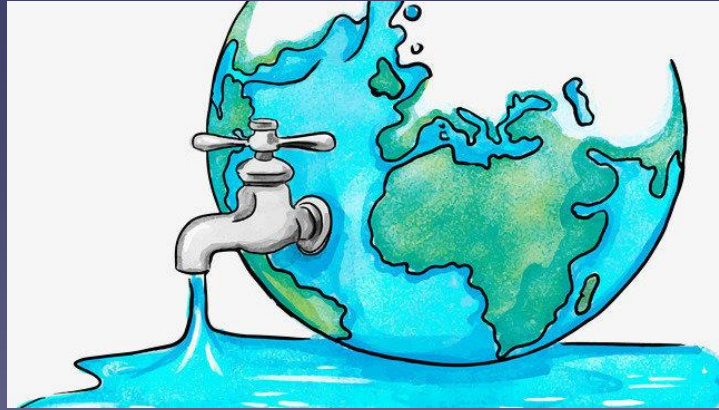
Sustainable Barista @ MCSL

- * Partnership with RTO - MTTEC to deliver nationally accredited barista & food safety skills
- * SITXFSA001 - Use hygienic practices for food safety
- * SITHFAB005 - Prepare and serve espresso coffee
- * Entry level work skills
- * Sustainability in the workplace, recycling coffee info



What is sustainability?

Let's take a quick virtual tour of MCSL
to see what your students will see



Water Management & Efficiency

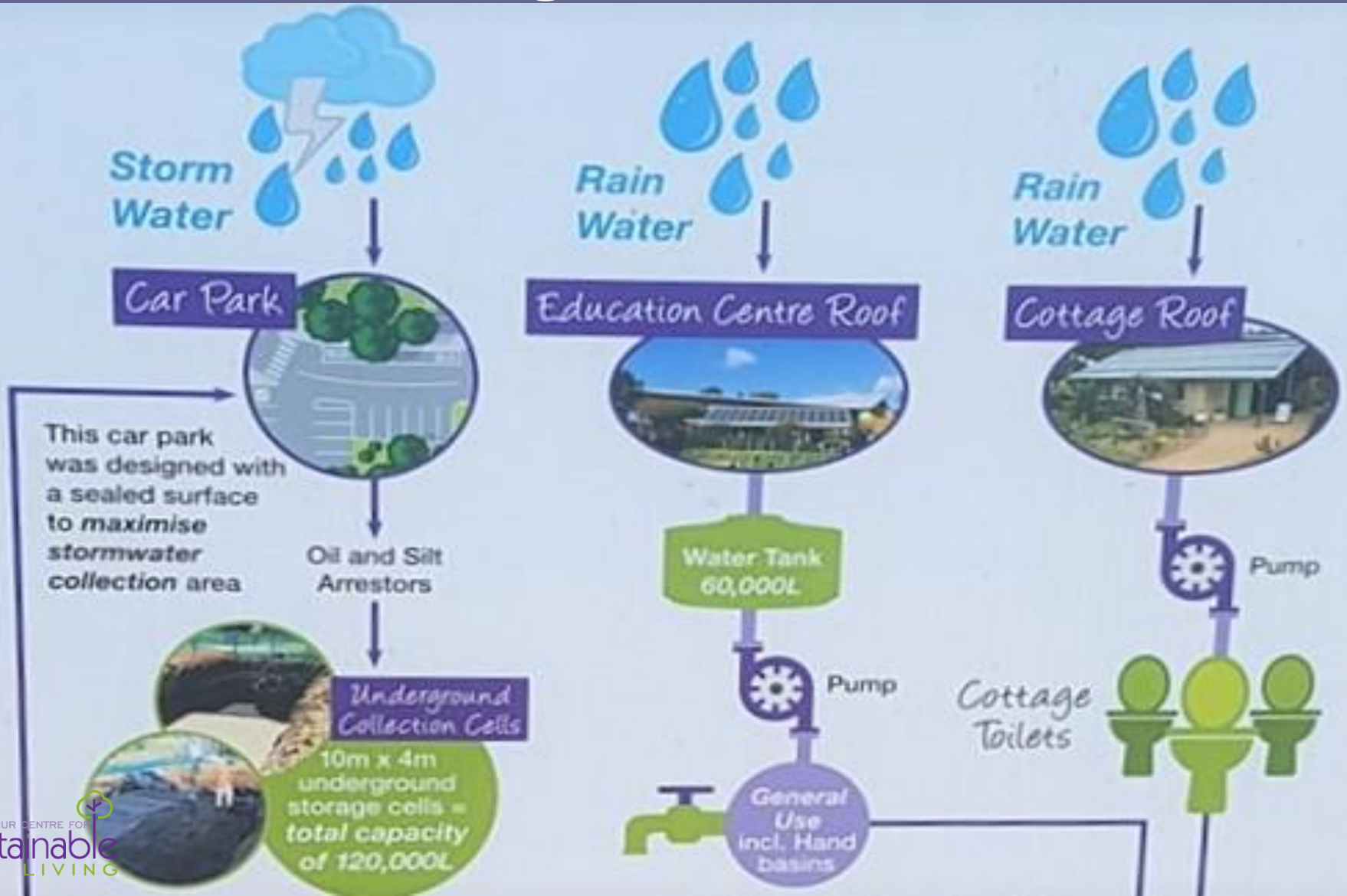
Water infrastructure on site

Water efficient practices

How do you save water at home?

Water restrictions?

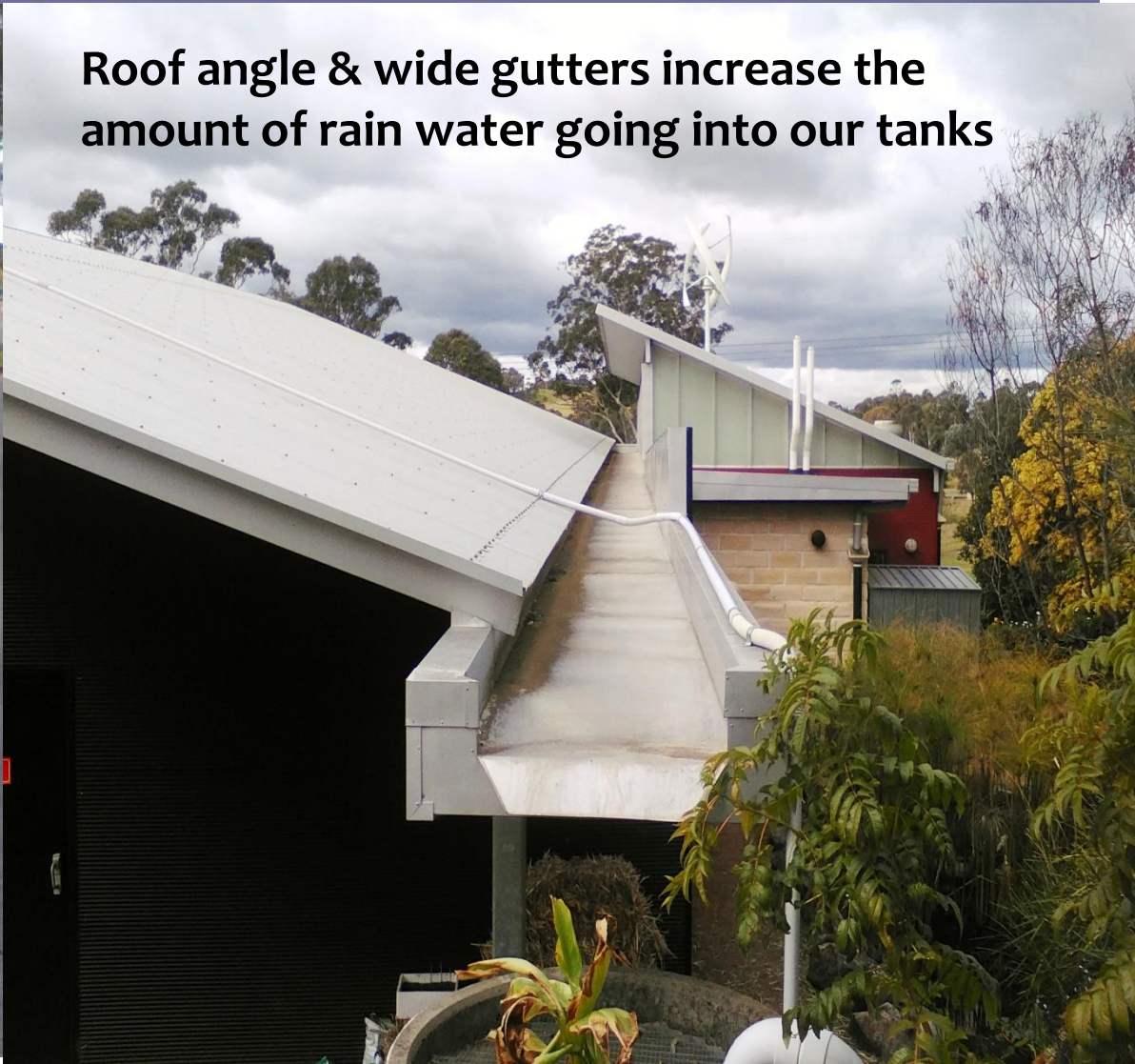
Water Management & Efficiency



Water Management & Efficiency



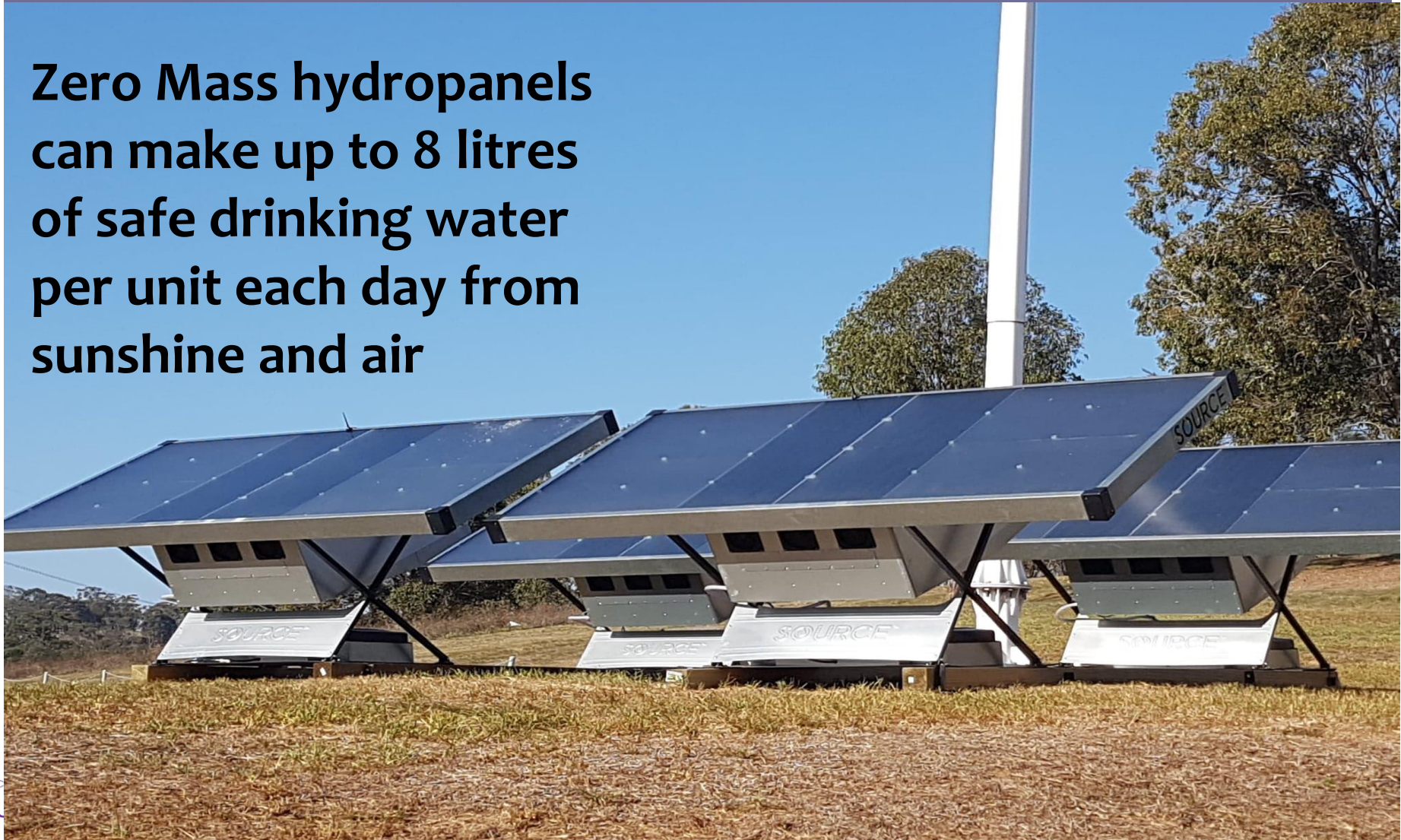
**Underground tanks
can hold up to
120,000 litres**



**Roof angle & wide gutters increase the
amount of rain water going into our tanks**

Drinking water made from sun & air

**Zero Mass hydropanels
can make up to 8 litres
of safe drinking water
per unit each day from
sunshine and air**



Water Efficient House



Watch this video all about water

<https://www.youtube.com/watch?v=b1f-G6v3voA>

Power at MCSL

Solar Electricity & Hot Water



Eyes from Above
Aerial Photography

Wind Power at MCSL



Energy saving video

https://www.youtube.com/watch?time_continue=118&v=1-g73ty9v04



Waste Management at MCSL

Toilet waste/sewerage
Organic & Food Waste
Animal waste
Recycling

Toilet Waste Management @ MCSL



Organics & Food Waste @ MCSL



How do you
make
compost?

What can you
do with
compost?

Organics & Food Waste @ MCSL



Worm Farms in recycled bath tubs



Animal Waste @ MCSL



Recycling animal waste



Recycling @ MCSL

Do you
know what
waste goes
in the:

- Red bin
- Yellow bin
- Green bin?



Soft Plastic Recycling @ MCSL



Replas
outdoor
furniture
made from
160,000
plastic bags.

Where can
you recycle
plastic bags
& other soft
plastic
waste?

Recycled Building Materials @ MCSL



Education Centre built with Timbercrete bricks, polystyrene,
recycled concrete

Biodiversity @ MCSL

Bush Tucker Garden
Eco-farm & Growing Food
Native gardens
Animals, insects & lizards

Bush Tucker Outdoor Education



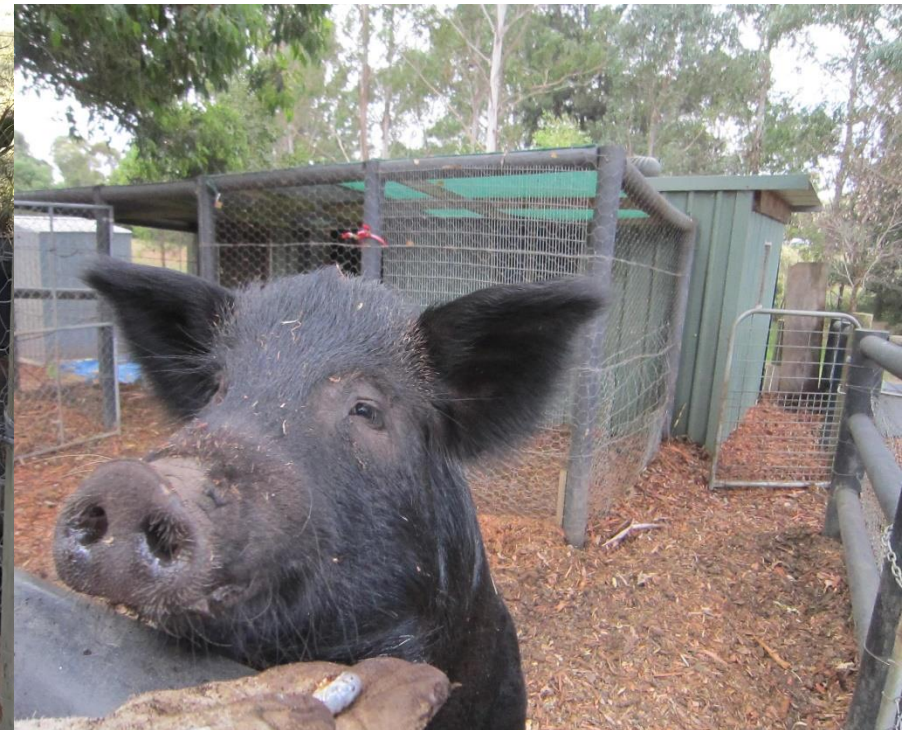
Sustainable Farming @ MCSL



Hydroponics System @ MCSL



Animals @ MCSL



Bees @ MCSL



Macarthur Beekeepers keep their bees @ MCSL and make honey. We also have Australian native bees



Questions?

